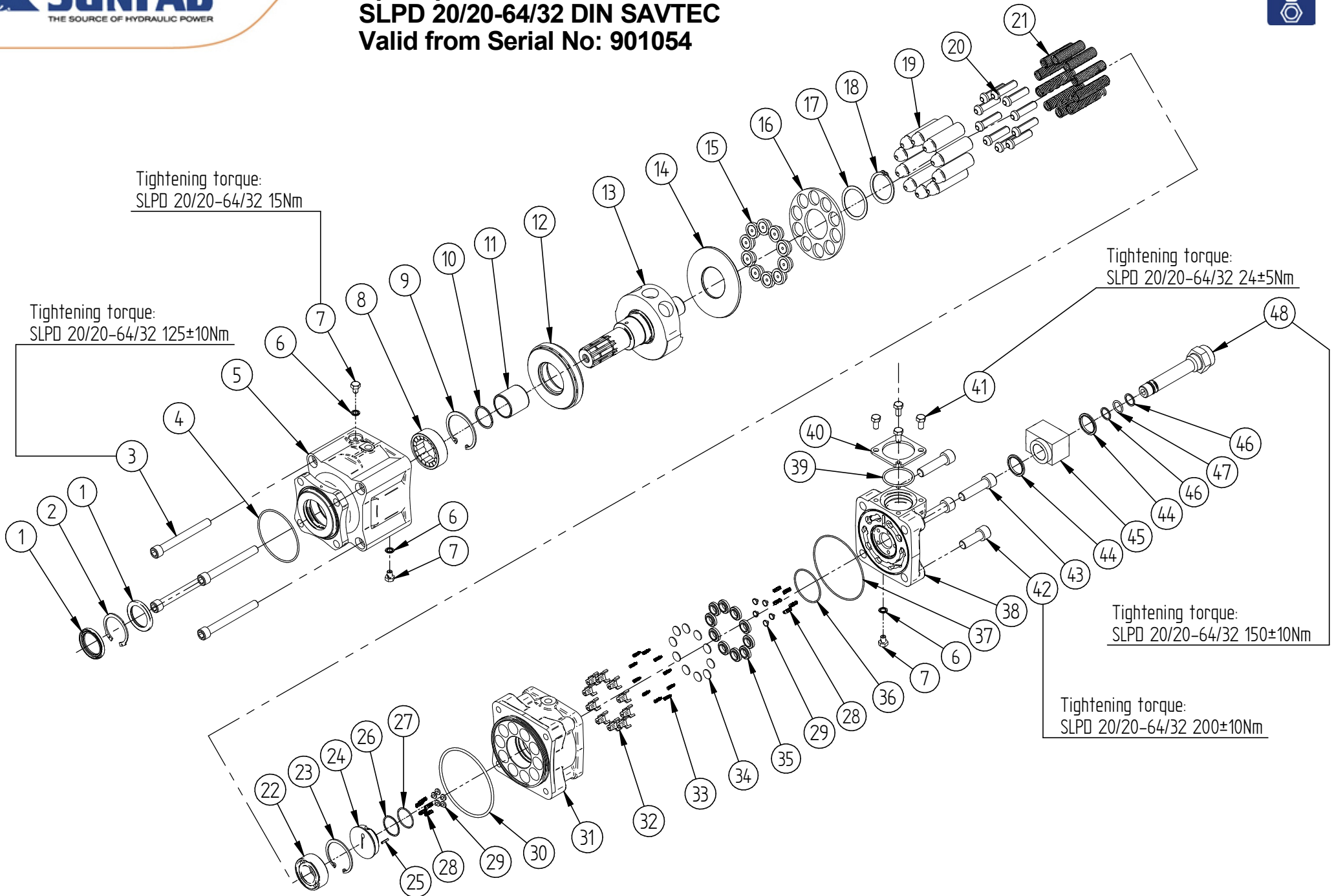




Contents

Exploded view.....	3
SLPD 20/20 & 28/28 DIN SAVTEC.....	4
SLPD 40/20, 56/28 & 64/32 DIN SAVTEC.....	5
SLPD 35/35, 46/46 & 53/53 DIN SAVTEC.....	6
Spare part kits	7
SAVTEC Valve.....	8

Spare part list
SLPD 20/20-64/32 DIN SAVTEC
Valid from Serial No: 901054



8213x2309 SLPD 20_20-64_32 DIN SAVTEC



SLPD 20/20, 28/28 DIN SAVTEC

Item	Part No.	Title	Type*	Qty.
1	91602	Shaft seal N	N - NBR	2
	92909	Shaft seal V	V - Viton	
2	91611	Lock ring		1
3	91620	Bolt		4
4	91441	O-ring		1
5	18614	Bearing housing	DL4 DIN 4-Hole	1
6	91124	Seal washer		3
7	17976	Bleed screw		3
8	17479	Roller bearing		1
9	90877	Lock ring		1
10	91559	Lock ring		1
11	92043	Innerring		1
12	18155	Thrust bearing		1
13	18648	Shaft SLPD 20/20	L35 - 20/20	1
	18652	Shaft SLPD 28/28	L35 - 28/28	
14	17879	Axial plate		1
15	17837	Sliding pad		6
16	18602	Sliding pad holder		1
17	91564	Spacer ring		1
18	91327	Lock ring		1
19	17836	Piston		6
20	50228	Filling pin		6
21	17897	Spring		6
22	91328	Roller bearing		1
23	90731	Lock ring		1
24	18323	Valve holder		1
25	91333	Lock pin		1
26	91428	Support ring		1
27	91427	O-ring		1
28	16703	Spring		9
29	16350	Pressure valve disc		9
30	90108	O-ring		1
31	18687	Cylinder block		1
32	17865	Suction valve guide		6
33	17931	Spring		6
34	17867	Suction valve disc		6
35	17868	Suction valve seat		6
36	91330	O-ring		1
37	90795	O-ring		1
38	18371	Back cover	S4S-4	1
39	90519	O-ring		1
40	20891	Clamping plate		2
41	90341	Bolt		4
42	91689	Bolt		1
43	91481	Bolt		3
44	91229	Seal washer		2
45	17381	T-connection		1
46	91479	Support ring		2
47	91309	O-ring		1
48	18324	Banjo bolt		1

*For different types, see datasheet at <http://www.sunfab.com> or contact Sunfab



SLPD 40/20, 56/28, 64/32 DIN SAVTEC

Item	Part No.	Title	Type*	Qty.
1	91602	Shaft seal N	N - NBR	2
	92909	Shaft seal V	V - Viton	
2	91611	Lock ring		1
3	91620	Bolt		4
4	91441	O-ring		1
5	18614	Bearing housing	DL4 DIN 4-Hole	1
6	91124	Seal washer		3
7	17976	Bleed screw		3
8	17479	Roller bearing		1
9	90877	Lock ring		1
10	91559	Lock ring		1
11	92043	Innerring		1
12	18155	Thrust bearing		1
13	18648	Shaft SLPD 40/20	L35	1
	18652	Shaft SLPD 56/28		
	18653	Shaft SLPD 64/32		
14	17879	Axial plate		1
15	17837	Sliding pad		9
16	18602	Sliding pad holder		1
17	91564	Spacer ring		1
18	91327	Lock ring		1
19	17836	Piston		9
20	50228	Filling pin		9
21	17897	Spring		9
22	91328	Roller bearing		1
23	90731	Lock ring		1
24	18323	Valve holder		1
25	91333	Lock pin		1
26	91428	Support ring		1
27	91427	O-ring		1
28	16703	Spring		9
29	16350	Pressure valve disc		9
30	90108	O-ring		1
31	18687	Cylinder block		1
32	17865	Suction valve guide		9
33	17931	Spring		9
34	17867	Suction valve disc		9
35	17868	Suction valve seat		9
36	91330	O-ring		1
37	90795	O-ring		1
38	18371	Back cover	S4S-4	1
39	90519	O-ring		1
40	20891	Clamping plate		2
41	90341	Bolt		4
42	91689	Bolt		1
43	91481	Bolt		3
44	91229	Seal washer		2
45	17381	T-connection		1
46	91479	Support ring		2
47	91309	O-ring		1
48	18324	Banjo bolt		1

*For different types, see datasheet at <http://www.sunfab.com> or contact Sunfab



SLPD 35/35, 46/46, 53/53 DIN SAVTEC

Item	Part No.	Title	Type*	Qty.
1	91602	Shaft seal N	N - NBR	2
	92909	Shaft seal V	V - Viton	
2	91611	Lock ring		1
3	91620	Bolt		4
4	91441	O-ring		1
5	18614	Bearing housing	DL4 DIN 4-Hole	1
6	91124	Seal washer		3
7	17976	Bleed screw		3
8	17479	Roller bearing		1
9	90877	Lock ring		1
10	91559	Lock ring		1
11	92043	Innerring		1
12	18155	Thrust bearing		1
13	18648	Shaft SLPD 35/35	L35	1
	18652	Shaft SLPD 46/46		
	18653	Shaft SLPD 53/53		
14	17879	Axial plate		1
15	17837	Sliding pad		10
16	18563	Sliding pad holder		1
17	91564	Spacer ring		1
18	91327	Lock ring		1
19	17836	Piston		10
20	50228	Filling pin		10
21	17897	Spring		10
22	91328	Roller bearing		1
23	90731	Lock ring		1
24	17838	Valve holder		1
25	91333	Lock pin		1
26	91428	Support ring		1
27	91427	O-ring		1
28	16703	Spring		10
29	16350	Pressure valve disc		10
30	90108	O-ring		1
31	18688	Cylinder block		1
32	17865	Suction valve guide		10
33	17931	Spring		10
34	17867	Suction valve disc		10
35	20891	Suction valve seat		10
36	91330	O-ring		1
37	90795	O-ring		1
38	18413	Back cover	S4S-4	1
39	90519	O-ring		1
40	20891	Clamping plate		2
41	90341	Bolt		4
42	91689	Bolt		1
43	91481	Bolt		3
44	91229	Seal washer		2
45	17381	T-connection		1
46	91479	Support ring		2
47	91309	O-ring		1
48	18324	Banjo bolt		1

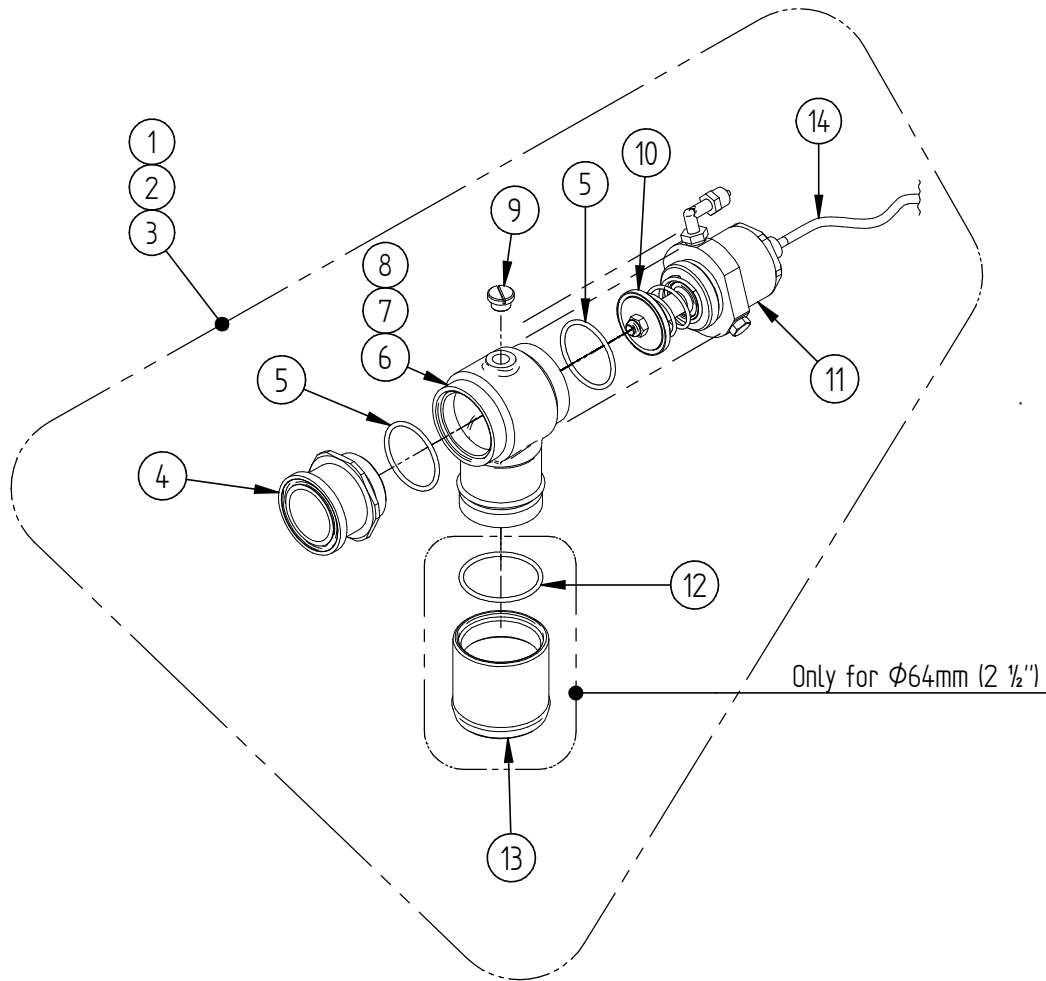
*For different types, see datasheet at <http://www.sunfab.com> or contact Sunfab



Spare part kits SLPD 20/20-64/32 DIN SAVTEC

Part No.	Included Items	Title
50304	1, 2, 4, 6, 26, 27, 30, 36, 37, 39, 43, 45, 46	Seal kit
50230	28, 29, 32, 33, 34, 35	Valve kit
50522	43, 45, 46, 47	Banjo bolt kit
50526	10, 11, 13	Shaft kit 20/20, 40/20, 35/35
50527	10, 11, 13	Shaft kit 28/28, 56/28, 46/46
50528	10, 11, 13	Shaft kit 53/53, 64/32
50529	24, 25, 26, 27	Valve holder kit 35/35, 46/46, 53/53
50530	24, 25, 26, 27	Valve holder kit 40/20, 56/28, 64/32
50534	6, 7	Bleed screw kit
50225	39, 40, 41	Clamping plate kit

*For different types, see datasheet at <http://www.sunfab.com> or contact Sunfab



SAVTEC Valve pneumatic

Item	Part No.	Title	Type*	Qty.
1	18598	Savtec valve complete	Ø38mm (1 1/2")	
2	18599	Savtec valve complete	Ø50mm (2")	
3	18600	Savtec valve complete	Ø64mm (2 1/2")	
4	17901	Valve seat		1
5	90519	O-ring		2
6	18380	Valve housing	Ø38mm (1 1/2")	1
7	18381	Valve housing	Ø50mm (2")	1
8	18508	Valve housing	Ø64mm (2 1/2")	1
9	90965	Plug plastic		1
10	50223	Valve washer		1
11	18594	Cylinder		1
12	90104	O-ring	Ø64mm (2 1/2")	1
13	18509	Connection	Ø64mm (2 1/2")	1
14	90867	Hose PA	Ø6x1mm L=4m	1

*For different types, see datasheet at <http://www.sunfab.com> or contact Sunfab