

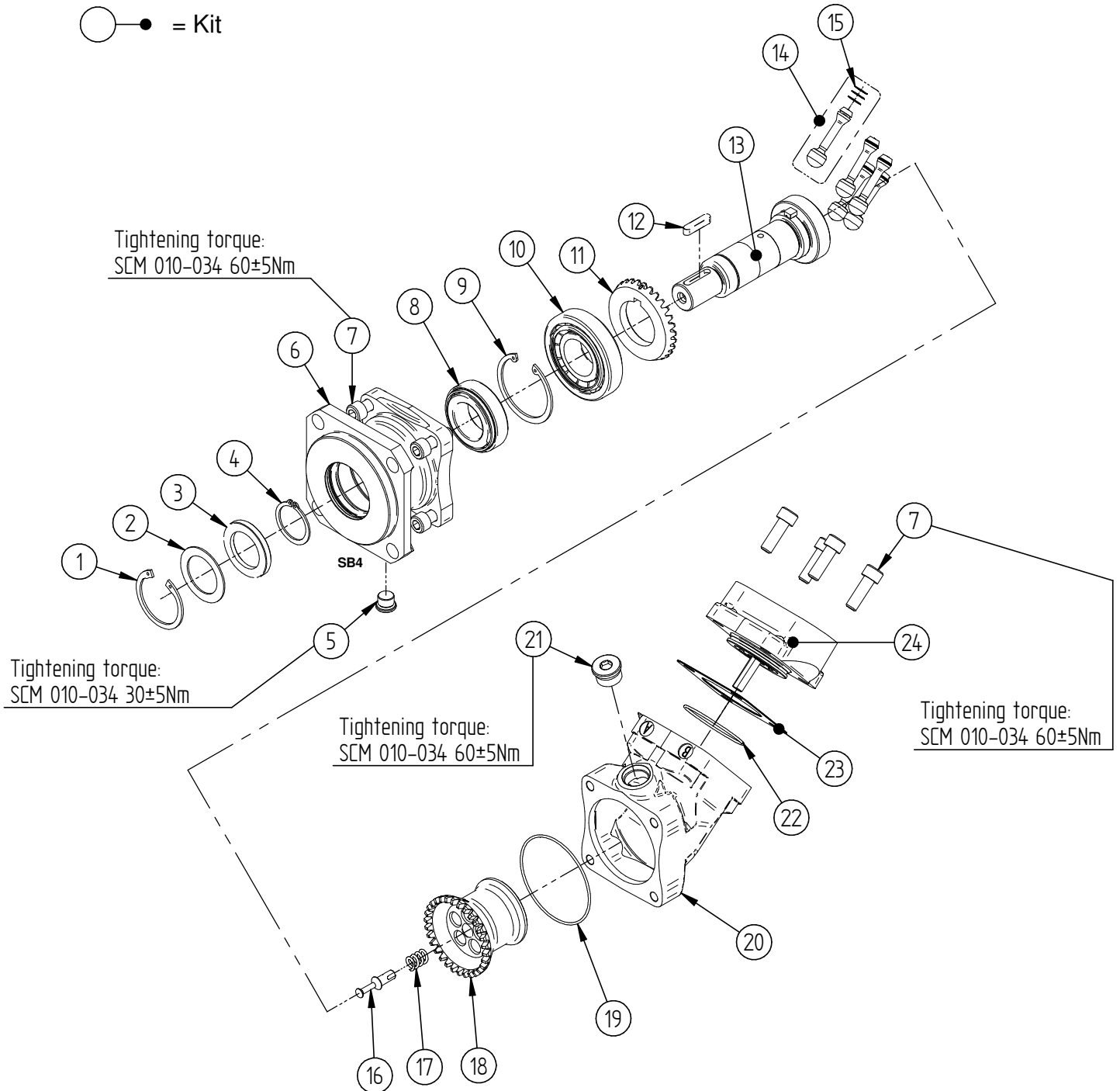


## Contents

Exploded view.....	3
SCM 010 SAE .....	4
SCM 012 SAE .....	5
SCM 017 SAE .....	6
SCM 025 SAE .....	7
SCM 034 SAE .....	8
SEAL KITS.....	9



○ → = Part  
○ ● = Kit





**SCM 010 SAE**

Item	Part No.	Title	Type*	Qty.
1	91923	Lock ring		1
2	30007	Washer		1
3	91630	Shaft seal	N - Nitrile	1
3	91722	Shaft seal	H - Nitrile, High pressure	1
3	91825	Shaft seal	V - Viton, High temperature	1
3	92293	Shaft seal	P - FPM, High temp./pressure	1
4	90780	Lock ring		1
5	91728	Plug		1
6	30098	Bearing housing	SB2 - SAE B 2-Hole	1
6	30455	Bearing housing	SB4 - SAE B 4-Hole	1
7	91667	Bolt		8
8	91938	Tapered roller bearing		1
9	90877	Lock ring		1
10	91666	Tapered roller bearing		1
11	20086	Gear ring		1
12	91853	Key		1
13	50783	Shaft	B13 - Spline 13T 16/32	1
13	51011	Shaft	B22 - Key Ø22,22mm	1
13	50785	Shaft	B25 - Key Ø25,4mm	1
14	50254	Piston		5
15	30483	Piston rings		15
16	21098	Spring pin		1
17	92078	Spring		1
18	20754	Cylinder barrel		1
19	91664	O-ring		1
20	30076	Angular housing		1
21	91735	Plug 7/8" UNF		1
22	91665	O-ring		1
23	20094	Shim		1
24	30494	Connection Cover	S3U	1
24	30492	Connection Cover	S3G	1
24	30480	Connection Cover	K3G	1

\*For different types, see datasheet at <http://www.sunfab.com> or contact Sunfab



**SCM 012 SAE**

Item	Part No.	Title	Type*	Qty.
1	91923	Lock ring		1
2	30007	Washer		1
3	91630	Shaft seal	N - Nitrile	1
3	91722	Shaft seal	H - Nitrile, High pressure	1
3	91825	Shaft seal	V - Viton, High temperature	1
3	92293	Shaft seal	P - FPM, High temp./pressure	1
4	90780	Lock ring		1
5	91728	Plug		1
6	30098	Bearing housing	SB2 - SAE B 2-Hole	1
6	30455	Bearing housing	SB4 - SAE B 4-Hole	1
7	91667	Bolt		8
8	91938	Tapered roller bearing		1
9	90877	Lock ring		1
10	91666	Tapered roller bearing		1
11	20086	Gear ring		1
12	91853	Key		1
13	50783	Shaft	B13 - Spline 13T 16/32	1
13	51011	Shaft	B22 - Key Ø22,22mm	1
13	50785	Shaft	B25 - Key Ø25,4mm	1
14	50279	Piston		5
15	20096	Piston rings		15
16	21098	Spring pin		1
17	92078	Spring		1
18	21033	Cylinder barrel		1
19	91664	O-ring		1
20	30076	Angular housing		1
21	91735	Plug 7/8" UNF		1
22	91665	O-ring		1
23	20094	Shim		1
24	30054	Connection Cover	S3U	1
24	30053	Connection Cover	S3G	1
24	30281	Connection Cover	K3G	1

\*For different types, see datasheet at <http://www.sunfab.com> or contact Sunfab



**SCM 017 SAE**

Item	Part No.	Title	Type*	Qty.
1	91923	Lock ring		1
2	30007	Washer		1
3	91630	Shaft seal	N - Nitrile	1
3	91722	Shaft seal	H - Nitrile, High pressure	1
3	91825	Shaft seal	V - Viton, High temperature	1
3	92293	Shaft seal	P - FPM, High temp./pressure	1
4	90780	Lock ring		1
5	91728	Plug		1
6	30098	Bearing housing	SB2 - SAE B 2-Hole	1
6	30455	Bearing housing	SB4 - SAE B 4-Hole	1
7	91667	Bolt		8
8	91938	Tapered roller bearing		1
9	90877	Lock ring		1
10	91666	Tapered roller bearing		1
11	20086	Gear ring		1
12	91853	Key		1
13	50783	Shaft	B13 - Spline 13T 16/32	1
13	51011	Shaft	B22 - Key Ø22,22mm	1
13	50785	Shaft	B25 - Key Ø25,4mm	1
14	50280	Piston		5
15	20095	Piston rings		15
16	21098	Spring pin		1
17	92078	Spring		1
18	21034	Cylinder barrel		1
19	91664	O-ring		1
20	30076	Angular housing		1
21	91735	Plug 7/8" UNF		1
22	91665	O-ring		1
23	20094	Shim		1
24	30056	Connection Cover	S3U	1
24	30055	Connection Cover	S3G	1
24	30283	Connection Cover	K3G	1

\*For different types, see datasheet at <http://www.sunfab.com> or contact Sunfab



**SCM 025 SAE**

Item	Part No.	Title	Type*	Qty.
1	91923	Lock ring		1
2	30007	Washer		1
3	91630	Shaft seal	N - Nitrile	1
3	91722	Shaft seal	H - Nitrile, High pressure	1
3	91825	Shaft seal	V - Viton, High temperature	1
3	92293	Shaft seal	P - FPM, High temp./pressure	1
4	90780	Lock ring		1
5	91728	Plug		1
6	30098	Bearing housing	SB2 - SAE B 2-Hole	1
6	30455	Bearing housing	SB4 - SAE B 4-Hole	1
6	30100	Bearing housing	SC4 - SAE C 4-Hole	1
7	91667	Bolt		8
8	91938	Tapered roller bearing		1
9	90877	Lock ring		1
10	91666	Tapered roller bearing		1
11	20086	Gear ring		1
12	91853	Key		1
13	50784	Shaft	B13 - Spline 13T 16/32	1
13	50786	Shaft	B25 - Key Ø25,4mm	1
13	50816	Shaft	C14 - Spline 14T 12/24	1
14	50279	Piston		7
15	20096	Piston rings		21
16	21047	Spring pin		1
17	92060	Spring		1
18	21035	Cylinder barrel		1
19	91664	O-ring		1
20	30076	Angular housing		1
21	91735	Plug 7/8" UNF		1
22	91665	O-ring		1
23	20094	Shim		1
24	30058	Connection Cover	S3U	1
24	30576	Connection Cover	V2U	1
24	30586	Connection Cover	R1U	1
24	30057	Connection Cover	S3G	1
24	30286	Connection Cover	K3G	1
24	30445	Connection Cover	V2M	1
24	30108	Connection Cover	R1M	1
24	31504	Connection Cover	S2U	1

\*For different types, see datasheet at <http://www.sunfab.com> or contact Sunfab



**SCM 034 SAE**

Item	Part No.	Title	Type*	Qty.
1	91923	Lock ring		1
2	30007	Washer		1
3	91630	Shaft seal	N - Nitrile	1
3	91722	Shaft seal	H - Nitrile, High pressure	1
3	91825	Shaft seal	V - Viton, High temperature	1
3	92293	Shaft seal	P - FPM, High temp./pressure	1
4	90780	Lock ring		1
5	91728	Plug		1
6	30098	Bearing housing	SB2 - SAE B 2-Hole	1
6	30455	Bearing housing	SB4 - SAE B 4-Hole	1
6	30100	Bearing housing	SC4 - SAE C 4-Hole	1
7	91667	Bolt		8
8	91938	Tapered roller bearing		1
9	90877	Lock ring		1
10	91666	Tapered roller bearing		1
11	20086	Gear ring		1
12	91853	Key		1
13	50784	Shaft	B13 - Spline 13T 16/32	1
13	50786	Shaft	B25 - Key Ø25,4mm	1
13	50816	Shaft	C14 - Spline 14T 12/24	1
14	50280	Piston		7
15	20095	Piston rings		21
16	21047	Spring pin		1
17	92060	Spring		1
18	21036	Cylinder barrel		1
19	91664	O-ring		1
20	30076	Angular housing		1
21	91735	Plug 7/8" UNF		1
22	91665	O-ring		1
23	20094	Shim		1
24	30060	Connection Cover	S3U	1
24	30577	Connection Cover	V2U	1
24	30587	Connection Cover	R1U	1
24	30059	Connection Cover	S3G	1
24	30288	Connection Cover	K3G	1
24	30423	Connection Cover	V2M	1
24	30109	Connection Cover	R1M	1
24	31505	Connection Cover	S2U	1

\*For different types, see datacheet at <http://www.sunfab.com> or contact Sunfab





**SCM 010-034 SAE Seal Kits**

Part No.	Includes Items	Title	Type*
50542	1, 2, 3	Shaft seal kit	N - Nitrile
50543	1, 2, 3	Shaft seal kit	H - Nitrile, High pressure
50544	1, 2, 3	Shaft seal kit	V - Viton, High temperature
50965	1, 2, 3	Shaft seal kit	P - FPM, High temp./pressure
50787	1, 2, 3, 19, 22, 23	Seal kit	N - Nitrile
50788	1, 2, 3, 19, 22, 23	Seal kit	H - Nitrile, High pressure
50789	1, 2, 3, 19, 22, 23	Seal kit	V - Viton, High temperature
50991	1, 2, 3, 19, 22, 23	Seal kit	P - FPM, High temp./pressure

\*For different types, see datasheet at <http://www.sunfab.com> or contact Sunfab